

Wide field survey of Draco dSph with Subaru/Hyper Suprime-Cam

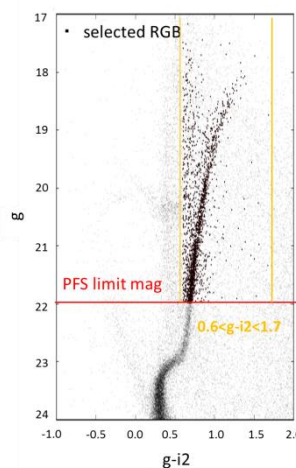
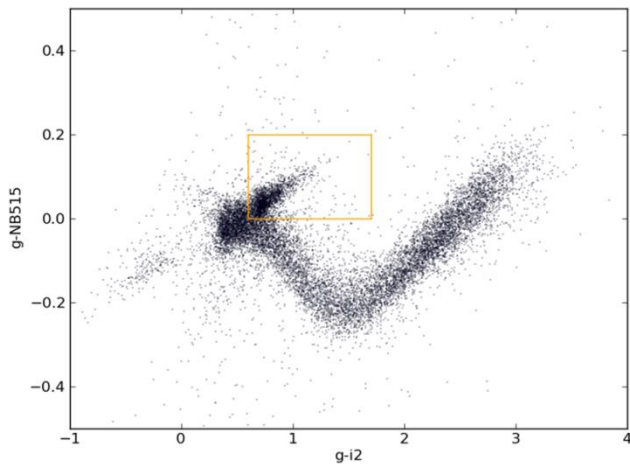
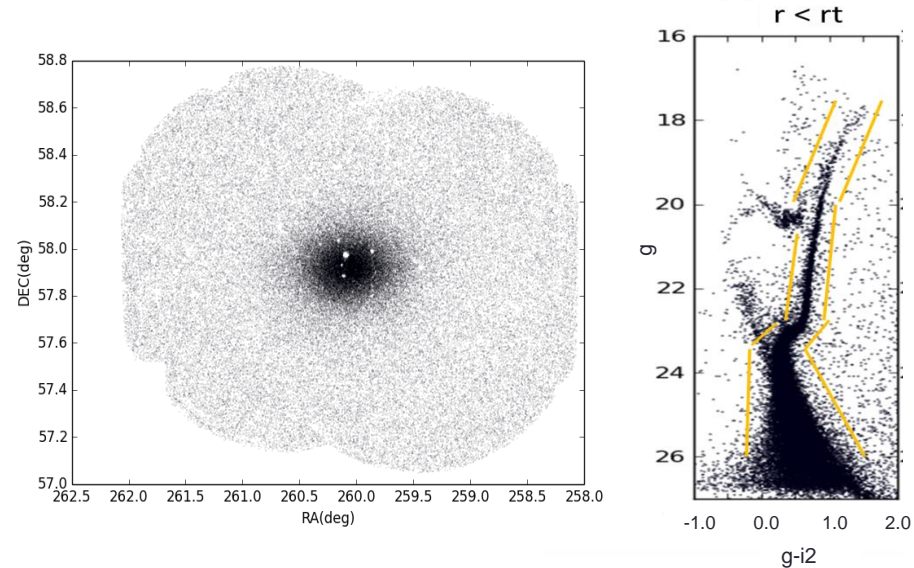
Hana Sasaki (Tohoku U), Masashi Chiba (Tohoku U), Yutaka Komiyama (NAOJ), Judy Cohen (Caltech), Mikito Tanaka (Tohoku U), Sakurako Okamoto (Shanghai), Miho Ishigaki (Kavli IPMU), Rosie Wyse (JHU), Evan Kirby (Caltech)

Observation of Draco (MW's satellite)

- Total field of view : 1.5deg \times 2.5 deg with 2 HSC pointings
- The main sequence goes \sim 26mag

deeper and wider than previous works !!

- The member stars of Draco exist out to **2 r_{tidal}**



Color-color diagram (CCD)

- RGB candidates are separated from MW foreground stars based on CCD
- Stars with $0 < g\text{-NB515} < 0.2$ and $0.6 < g\text{-i2} < 1.7$ are selected as RGB
- **About 2000 candidates of RGB star will be used as targets of PFS observation**