

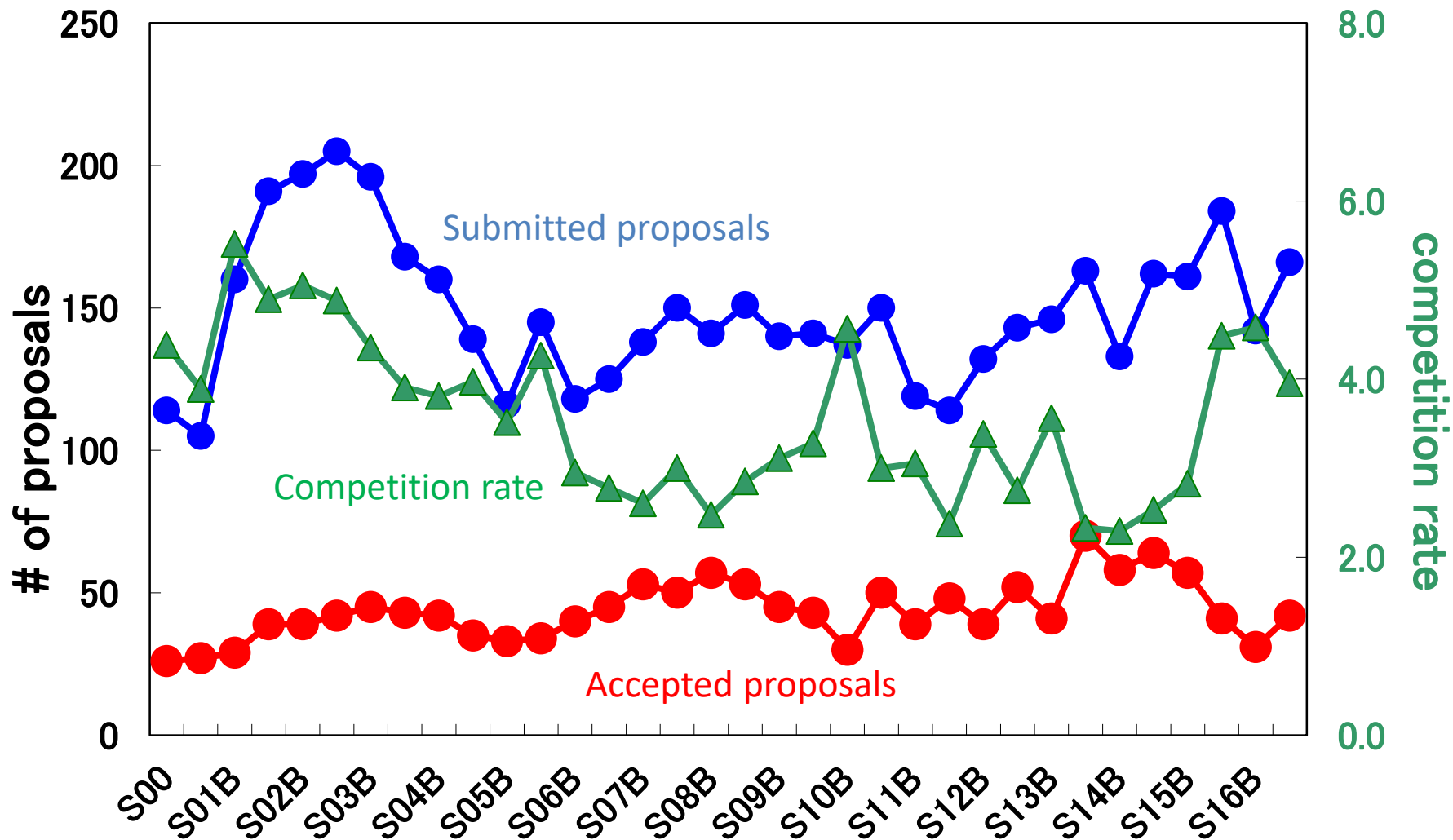
Subaru TAC report

Masaru Kajisawa (Ehime U.)

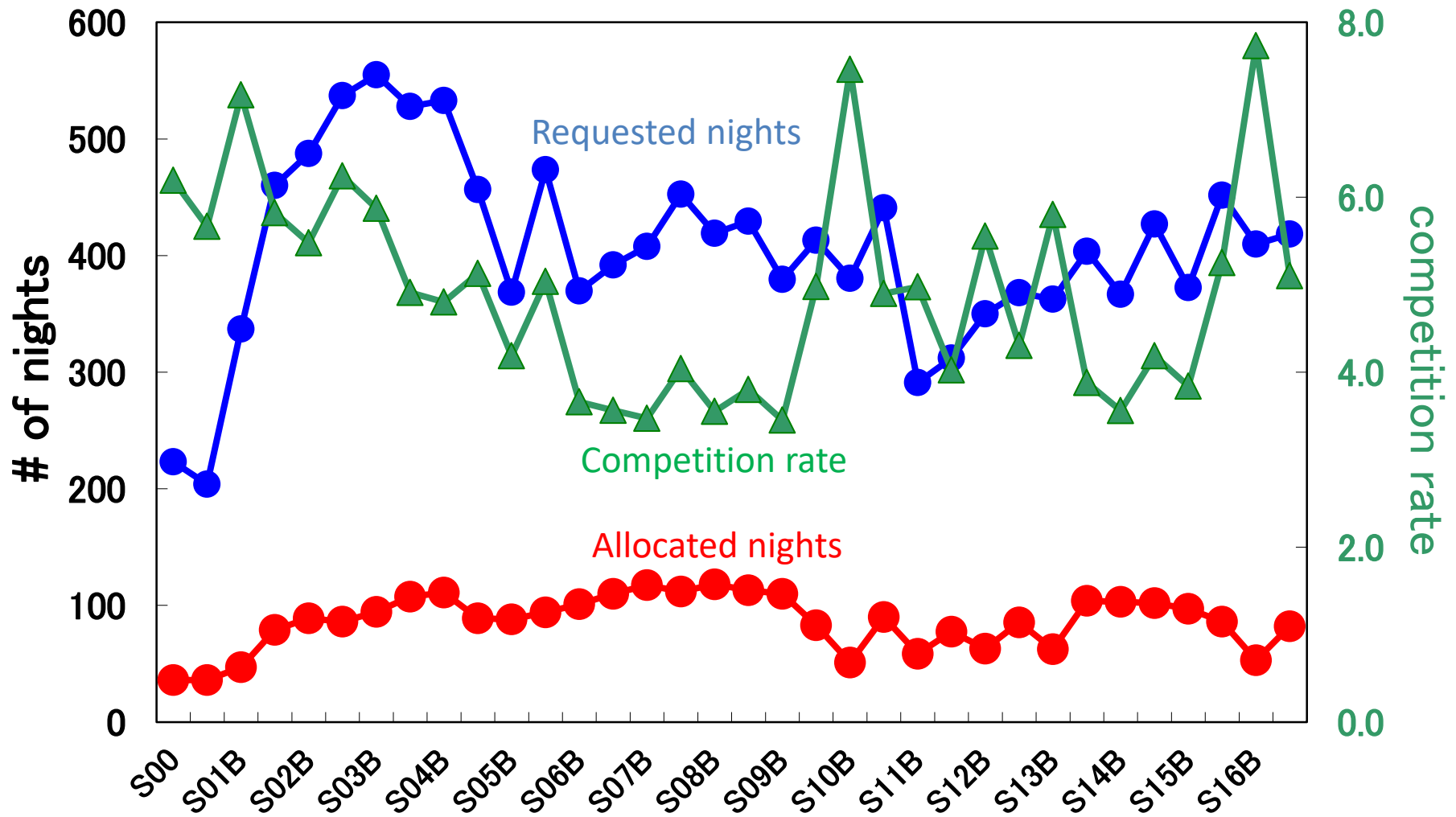
Current TAC members

- Masaru Kajisawa (Ehime U., chair)
- Kouji Ohta (Kyoto U., co-chair)
- Fumi Yoshida (NAOJ)
- Misato Fukagawa (Nagoya U.)
- Mitsuhiko Honda (Kurume U.)
- Toshiya Ueta (U. of Denver)
- Kei Kotake (Fukuoka U.)
- Kentaro Nagamine (Osaka U.)
- Masayuki Akiyama (Tohoku U.)
- Shinya Komugi (Kogakuin U.)
- Youichi Ohyama (ASIAA)

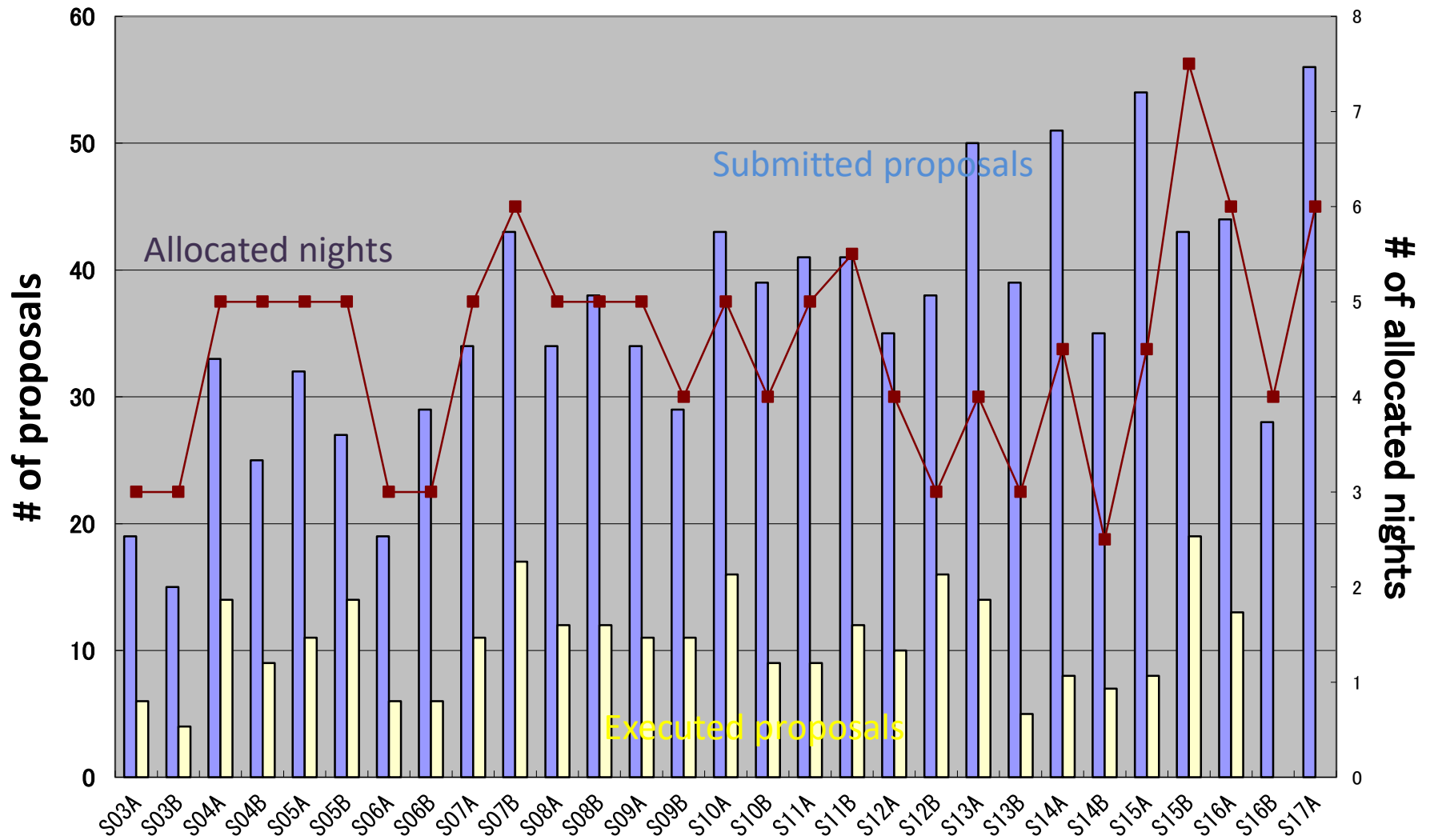
Submitted/approved proposals



Requested/allocated nights

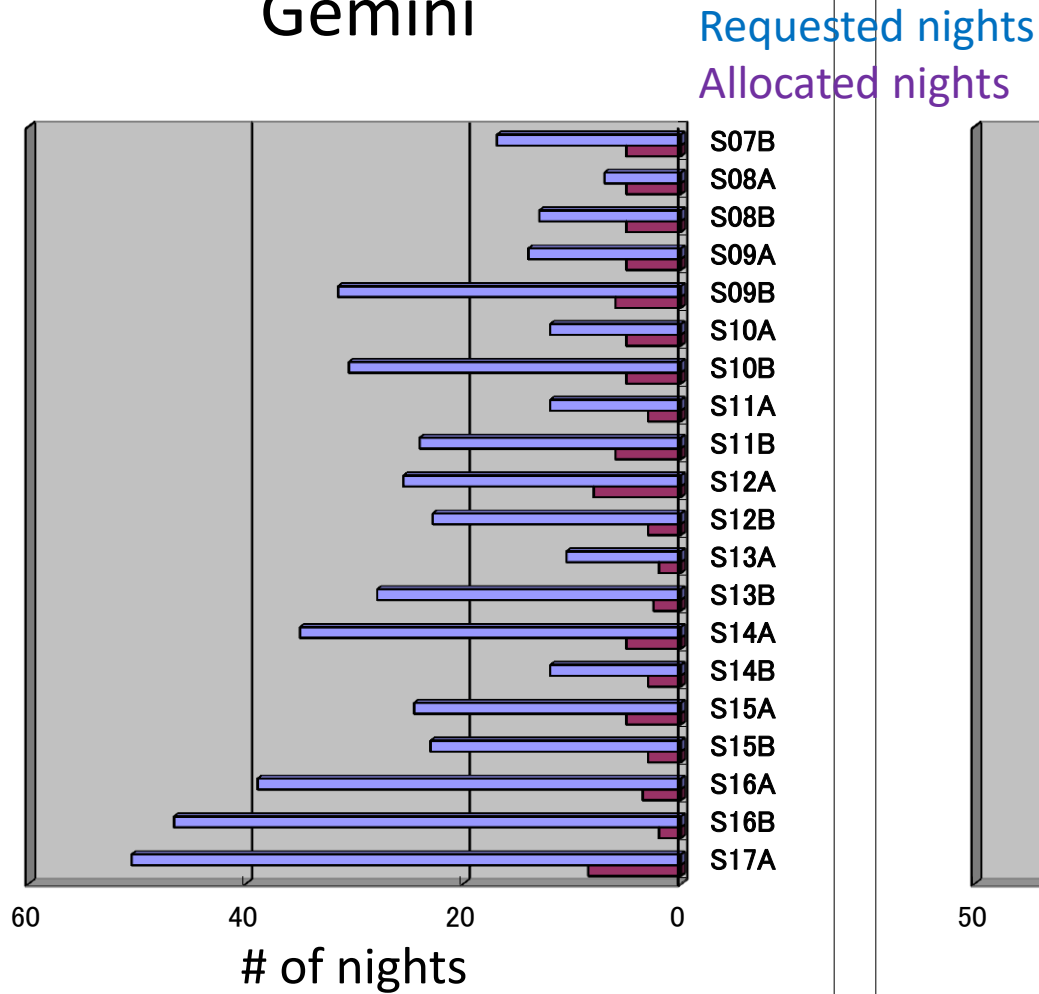


Service program

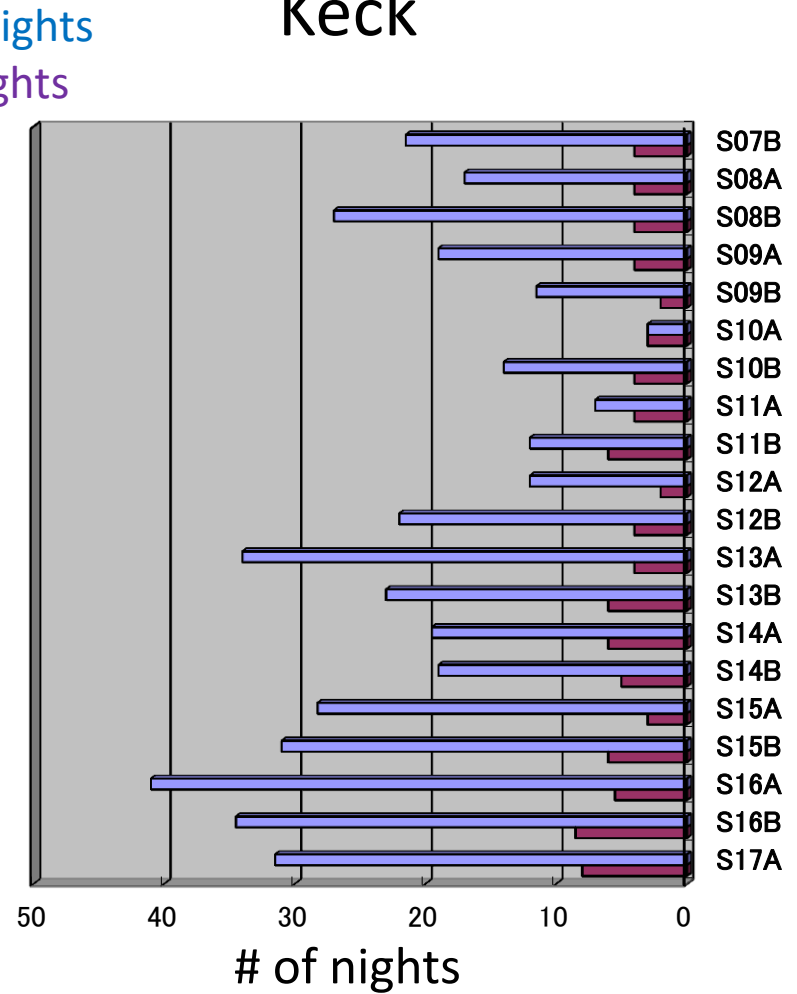


Time exchange program

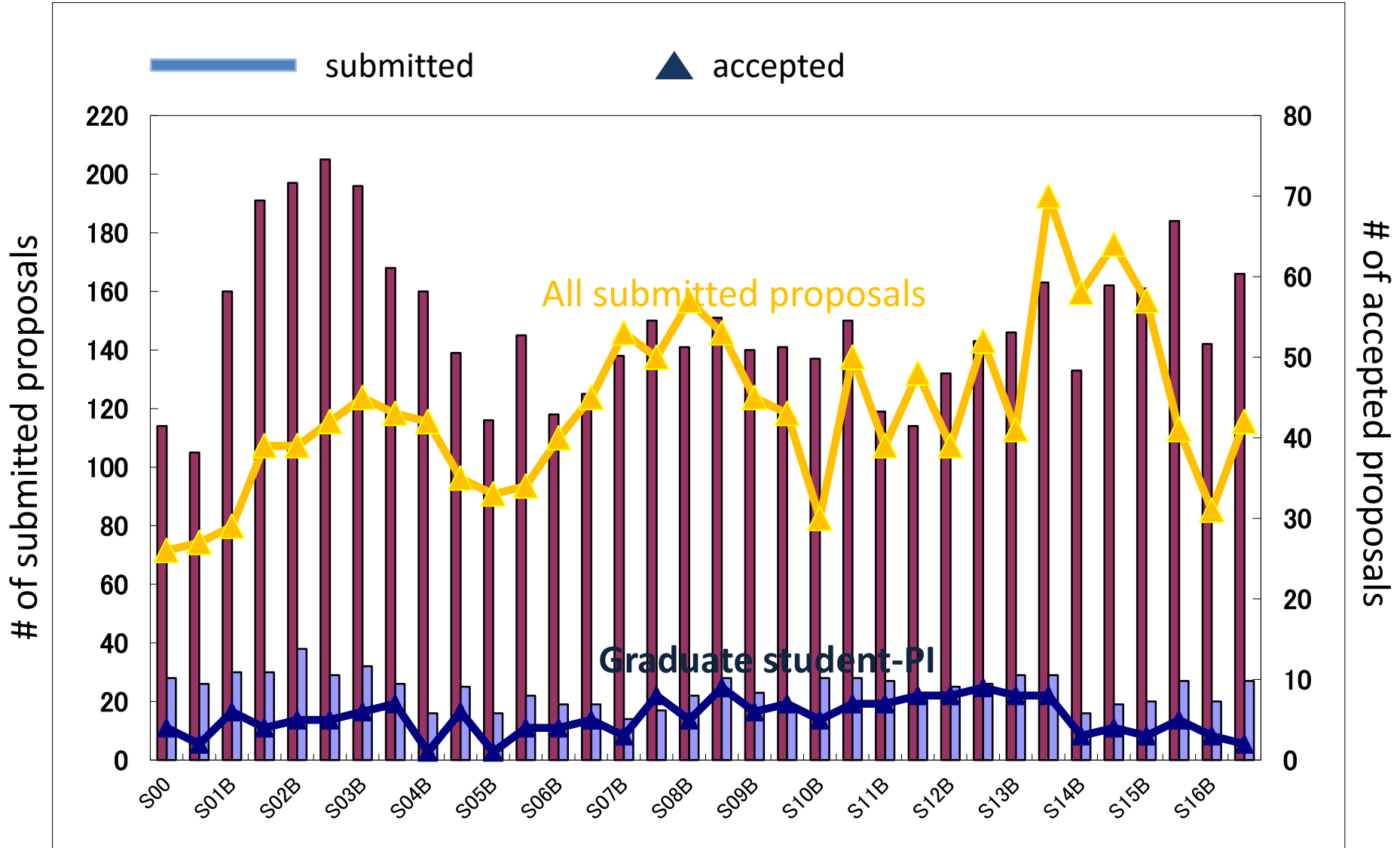
Gemini



Keck



Graduate student-PI proposals



S16B

- Mirror hatch repair & Primary mirror recoating
 - extremely limited amount of available nights
 - 49 nights allocated to 31 normal & intensive proposals
 - 4 nights allocated to ~8 service program
 - high competition rate
- Postponement of M1 recoating
 - two-times additional approval (July & September)
 - 14 proposals were additionally approved.
 - Additional nights were allocated to 9 originally accepted proposals.
 - Finally 81 nights were allocated to 45 normal & intensive proposals.
 - competition rate is 3.1 in number of proposals
4.4 in number of nights

S17A

- Mirror hatch repair & increase of SSP nights
 - limited amount of available nights
 - 69 nights were allocated to 42 normal proposals
 - 6 nights were allocated to ~12 service proposals
 - competition rate is 4.0 in number of proposals
 - 5.5 in number of nights
- EAO time
 - 3 DDT nights were allocated to EAO time proposals.
 - 14 proposals (21.7 nights in total) were submitted to EAO time.
 - 2 proposals with the highest scores were approved as EAO time program.

Recent changes/notes

- HSC queue mode (from S16A)
 - ✓ Reviewed/scored/selected as a normal program
 - ✓ approved proposals → grade A or grade B
(ranking in the group, referee score)
 - ✓ not approved proposals → grade C
(higher priority than filler program)
 - ✓ HSC proposals should be basically queue mode (from S17A).
Additional explanation is needed for the classical mode.
 - ✓ HSC is not available in Service program.
Please use HSC queue mode.

Recent changes/notes

- HSC narrow-band (or custom) filters
 - ✓ In many cases, only 1 NB filter can be used in each HSC run due to the limited number of the filter slots
 - ✓ Carefully read HSC instrument pages and check the predetermined filters by the HSC SSP observations
 - ✓ Operation/scheduling feasibility check by the observatory is done for proposals which heavily use HSC NB filters
 - ✓ HSC NB programs are blocked from TOOs (from S16B).

Recent changes/notes

- (extremely) Limited availability of dark nights
 - ✓ The number of available dark nights (including open-use HSC run) could be extremely limited in S17B & S18A due to M1 recoating & increase of SSP nights.
Please carefully check the call for proposals.
 - ✓ Currently almost all dark nights are allocated to HSC observations. It is very difficult to assign dark nights to observations with other instruments.
 - ✓ encourage to use the time-exchange program and 2nd - choice instruments effectively

Recent changes/notes

- Service Program

- ✓ Proposals whose targets are not specified at the proposal submission should be submitted to Normal program (from S16B)
- ✓ Technical details section in the cover page of the service proposal (from S17A). Technical review is done by the observatory.
- ✓ February in semester A and January in semester B tend to be crowded in schedule and be difficult to be assigned.
- ✓ Dark night proposals also tend to be highly competitive.

Recent changes/notes

- **ToO proposals**
 - ✓ Specify all possible instruments which can be used for the ToO
- **2nd-choice instrument**
 - ✓ We encourage to describe 2nd-choice if your science goals can be (fully or partly) achieved by other (Subaru/Gemini/Keck) instruments
 - ✓ If 2nd-choice is blank, TAC basically judge that the proposers disfavor any other instruments in the program!
- **EAO time in S17B**
 - ✓ 3 DDT nights are allocated to EAO time as in S17A.
 - ✓ Maximum 3 nights can be requested in a EAO proposal.
 - ✓ Only Normal program with Subaru instruments
(cannot submit to service, Keck/Gemini time-exchange programs)
 - ✓ Only classical mode (cannot use HSC queue, TOO)

S17B schedule plan

- CfP open: around 2017/02/08
- Deadline for normal/intensive program
2016/**03/07** (Tue) 12:00:00 JST
- Deadline for service program
2016/**04/04** (Tue) 12:00:00 JST