

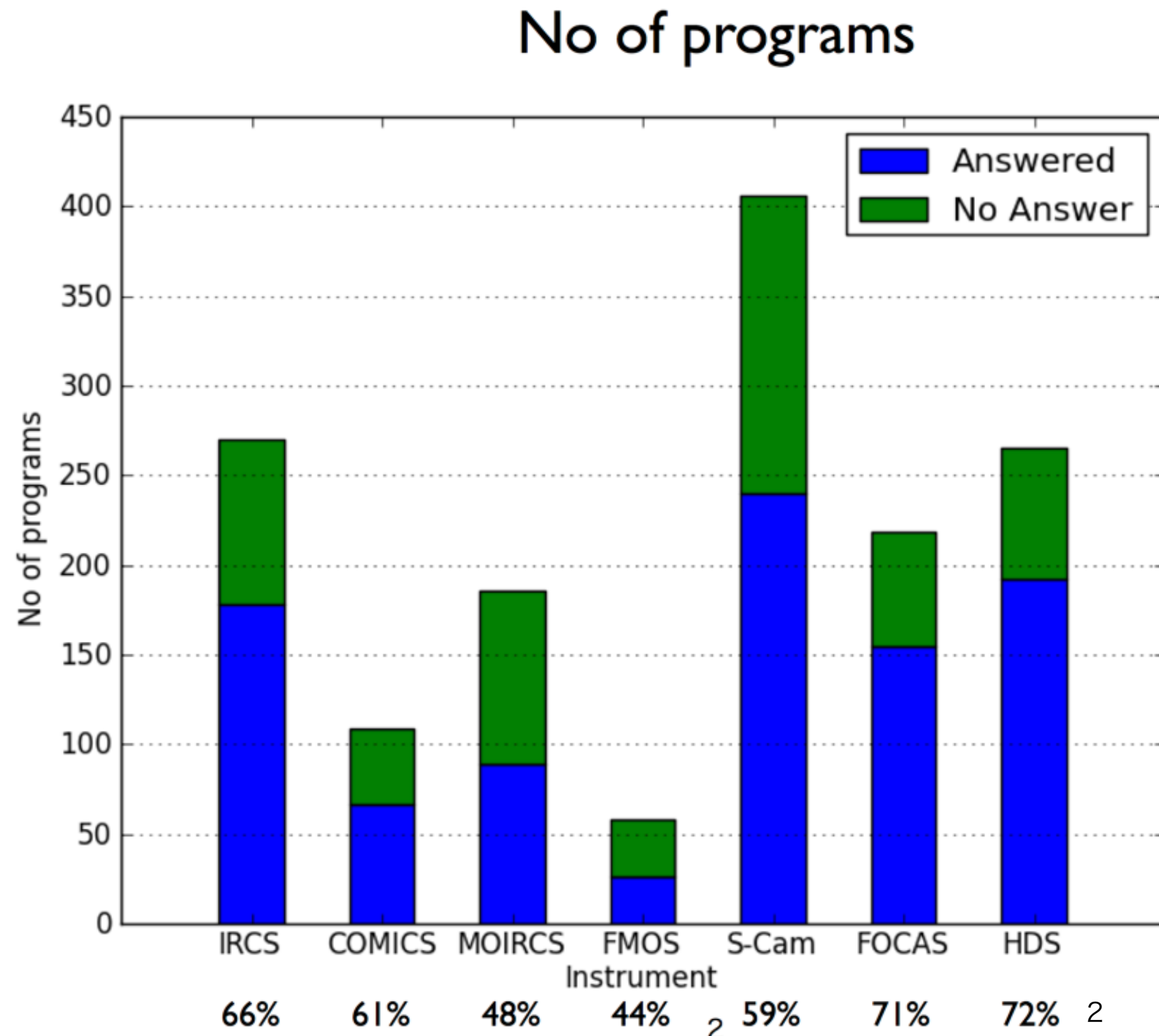
# Results from Subaru Publication Survey

---

Ikuru Iwata, Masaomi Tanaka, Chie Yoshida (NAOJ)

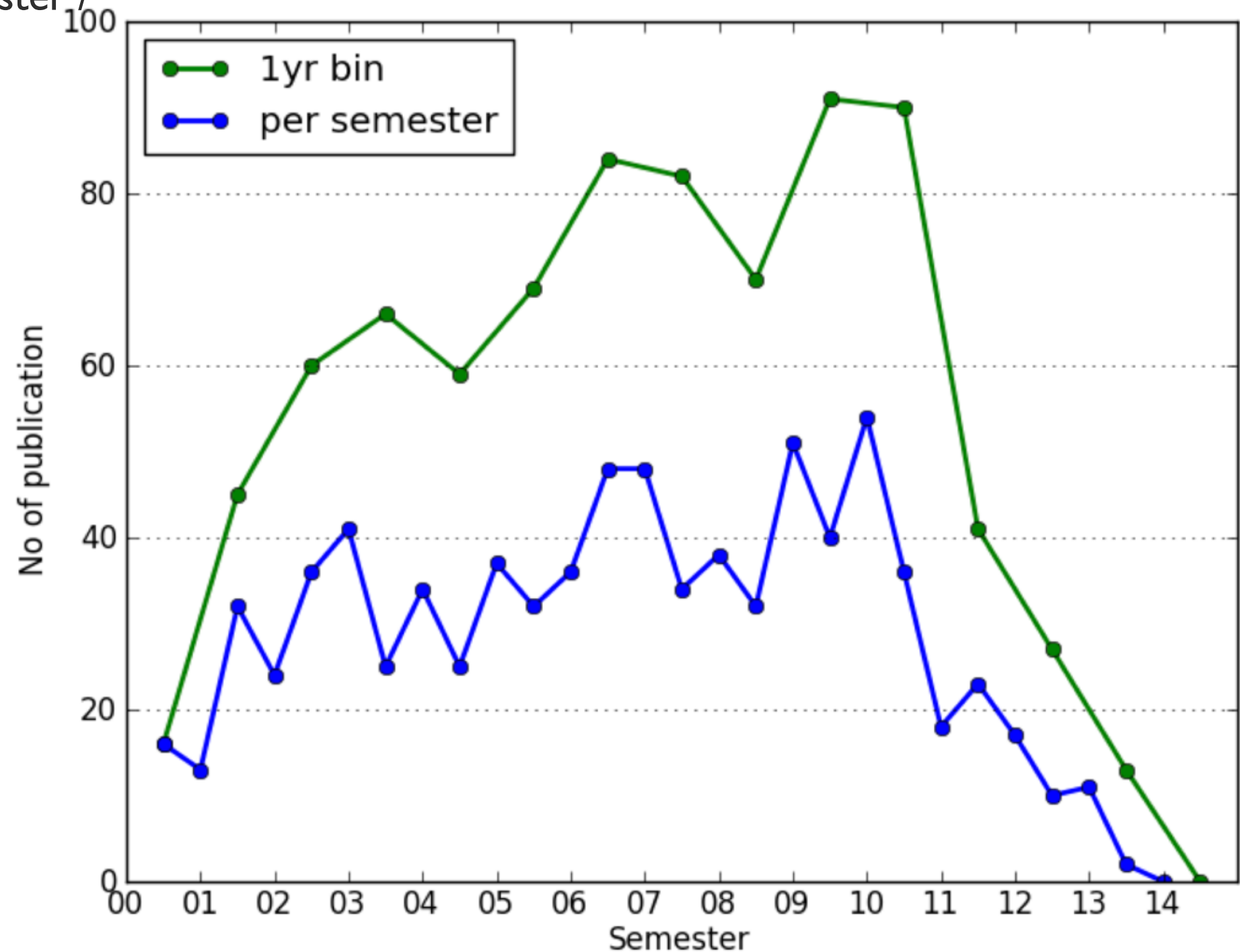
# Publication Survey in 2014

- Normal open-use, service programs, time exchange programs, UH time
- From S00 to S13B (+some S14A)
- 1136 answers among 1760 programs - 65% reply rate
- PI-related publication only (publications based on data archive (SMOKA) are not included.)
- Hereafter statistics are for seven current facility instruments.



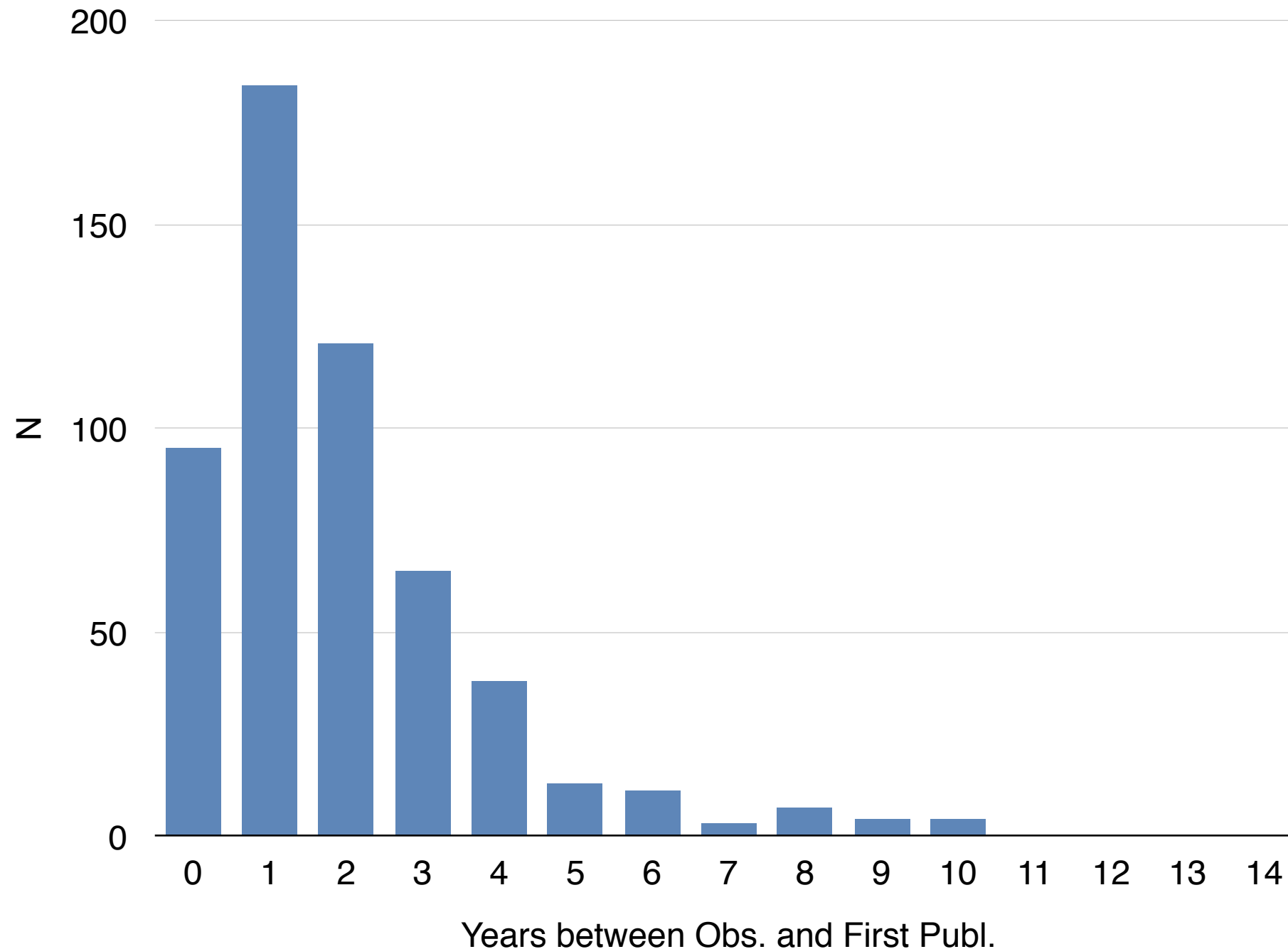
# Number of Publications

- Publications plotted by semester / year of observations
- 813 publications  
(with duplication)
- 524 publications  
(without duplication)

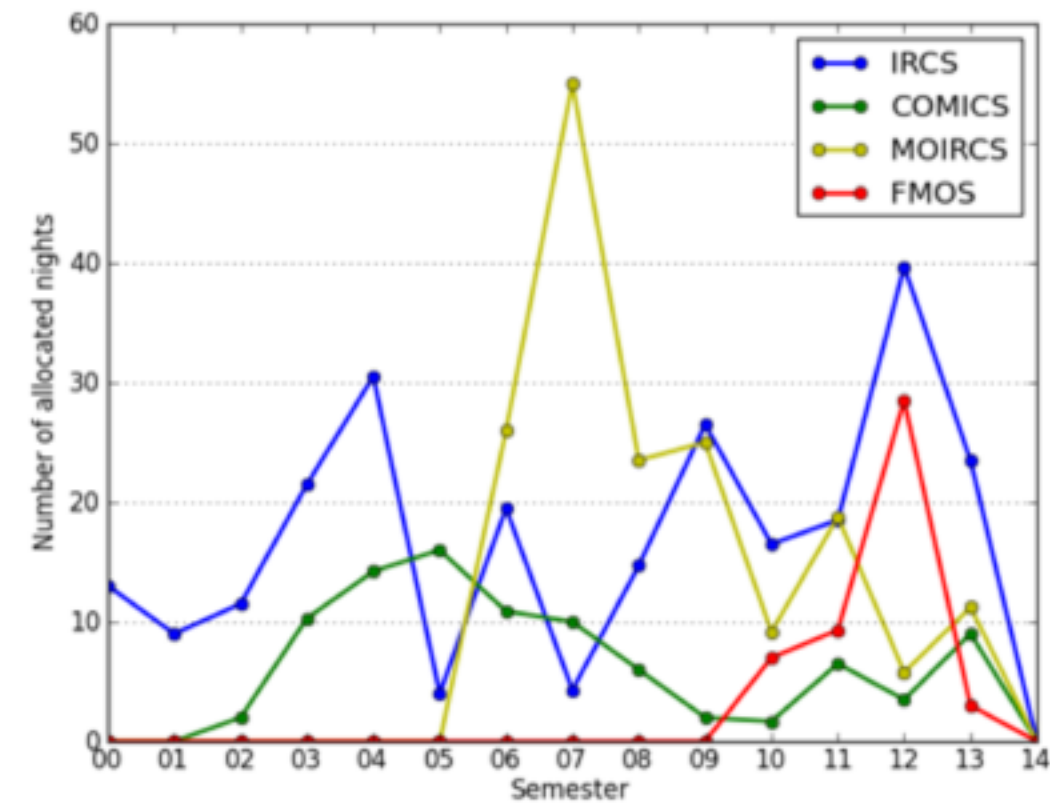
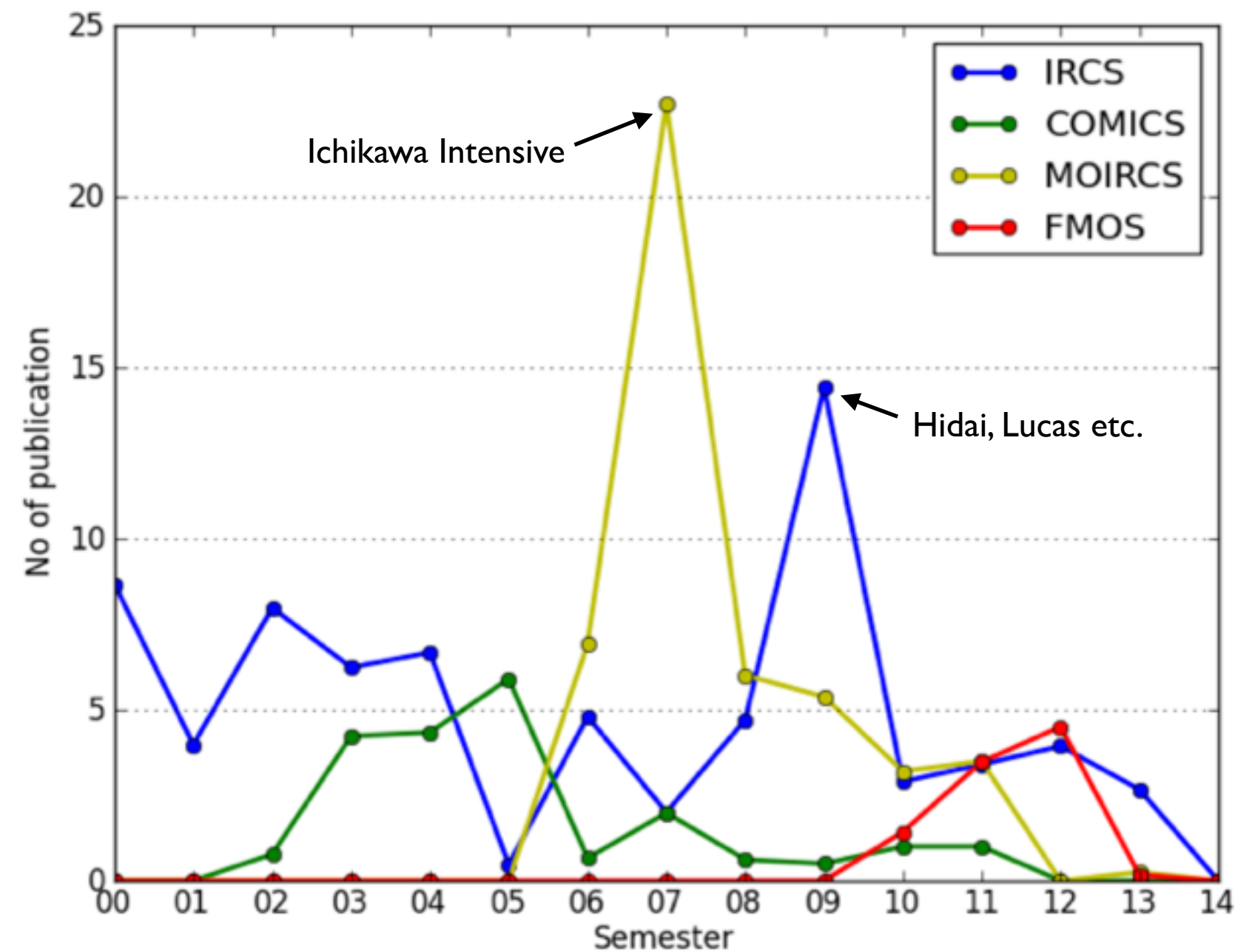


# Distribution of years between Observation and First Publication

---

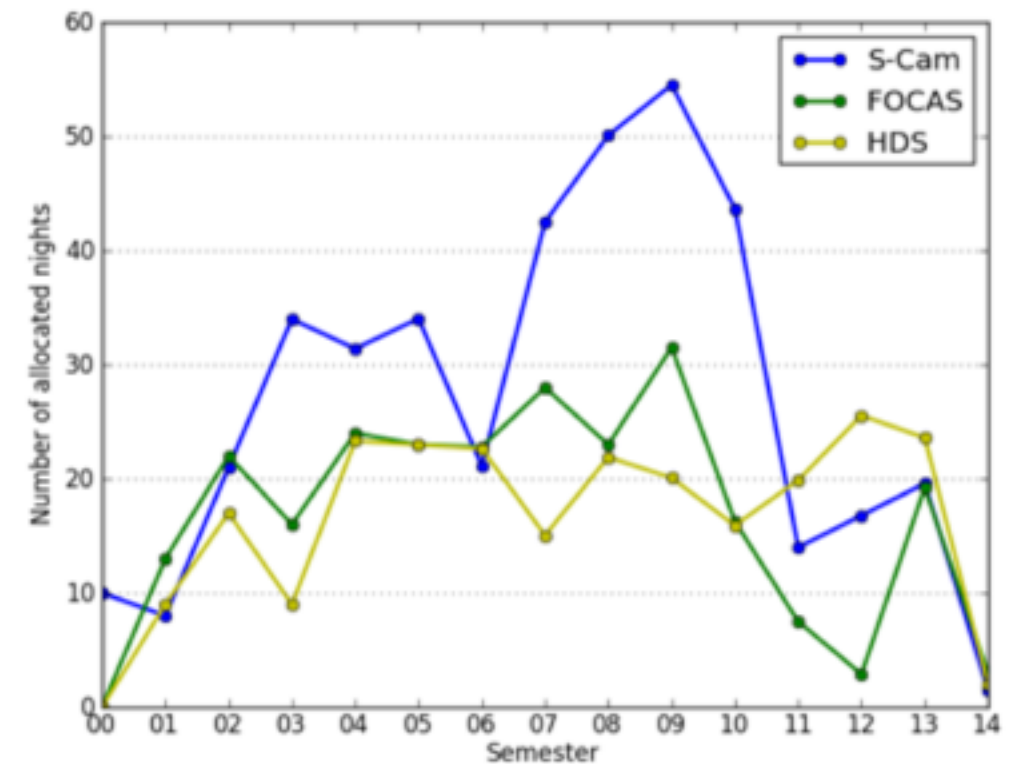
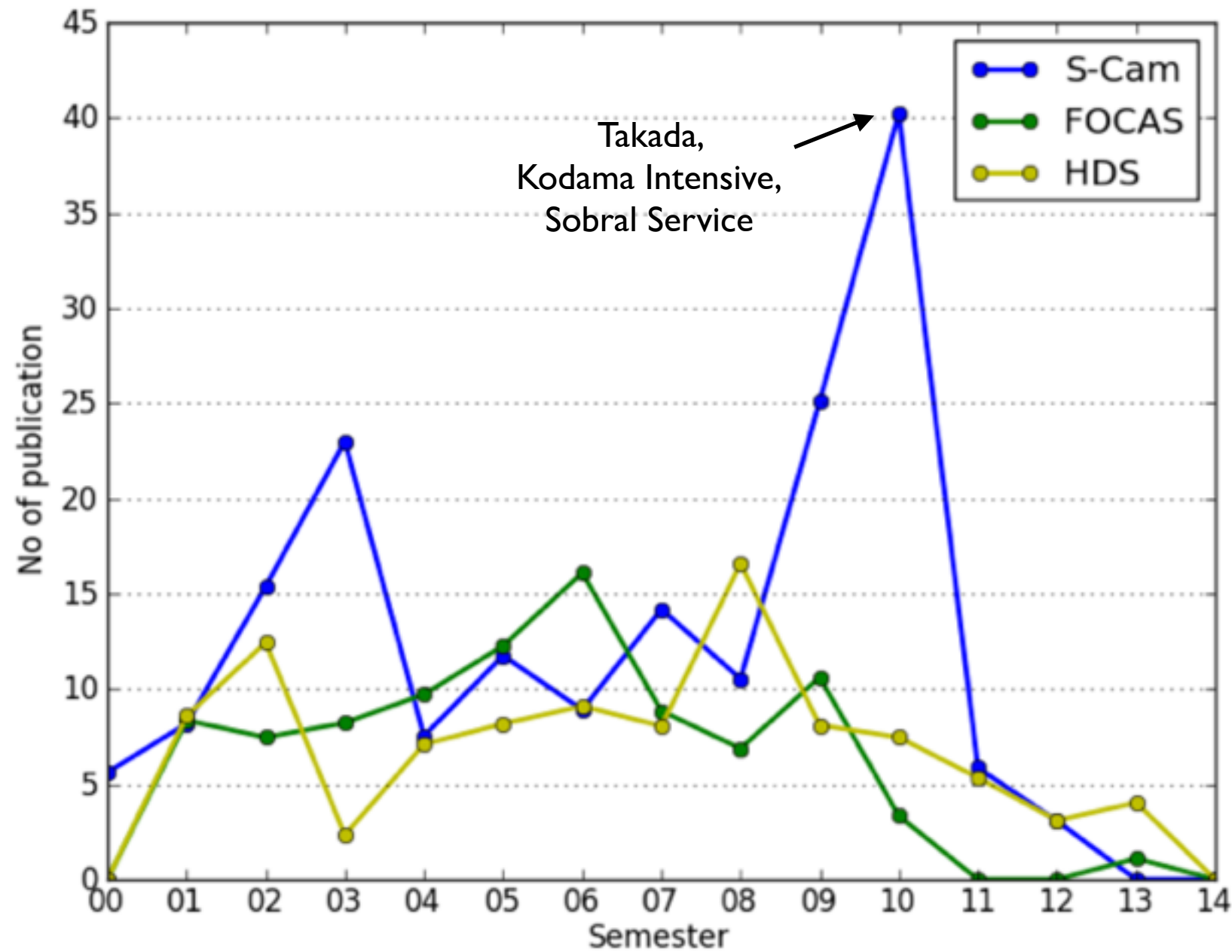


# Number of Publications - IR Instruments



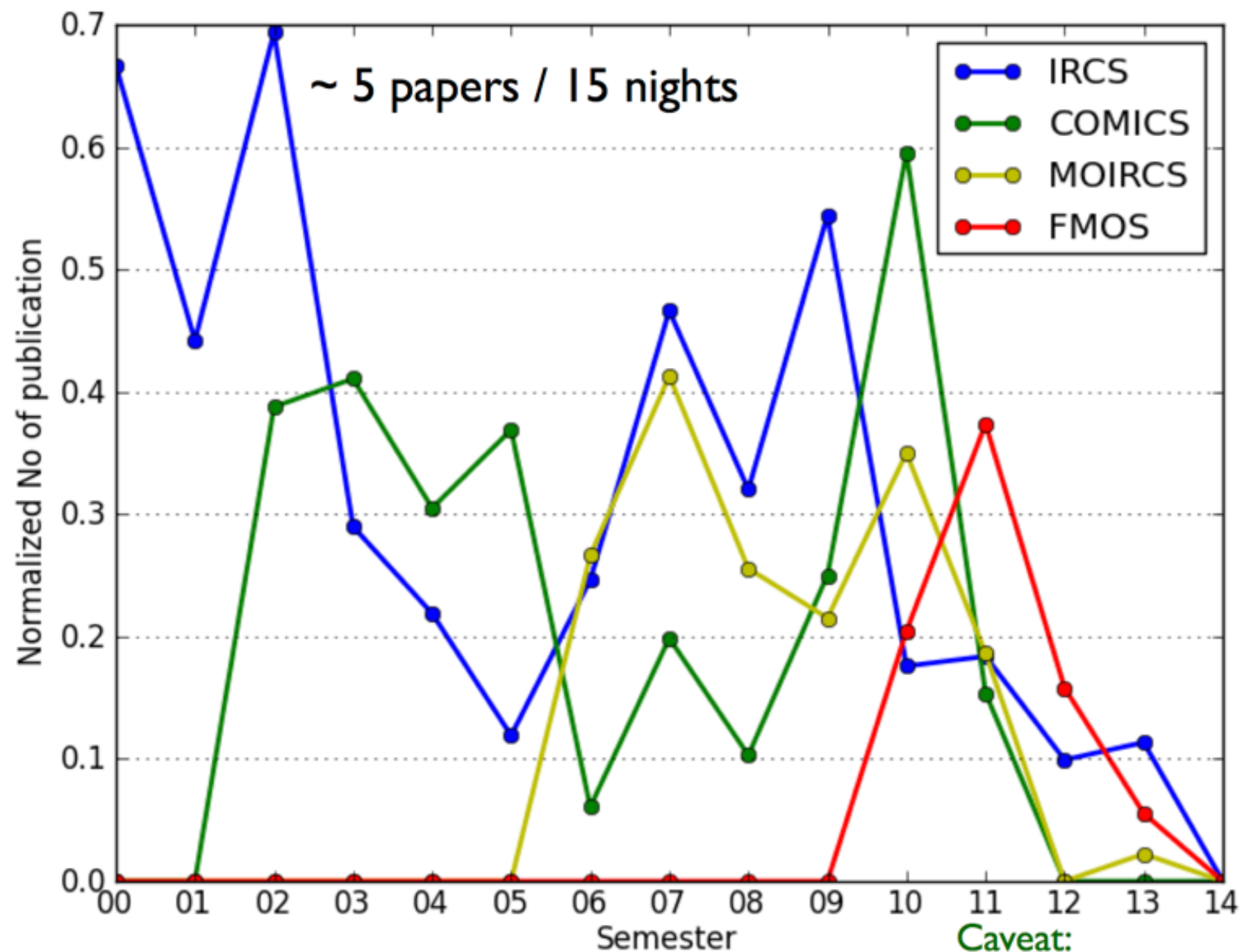
allocation

# Number of Publications - Opt Instruments



allocation

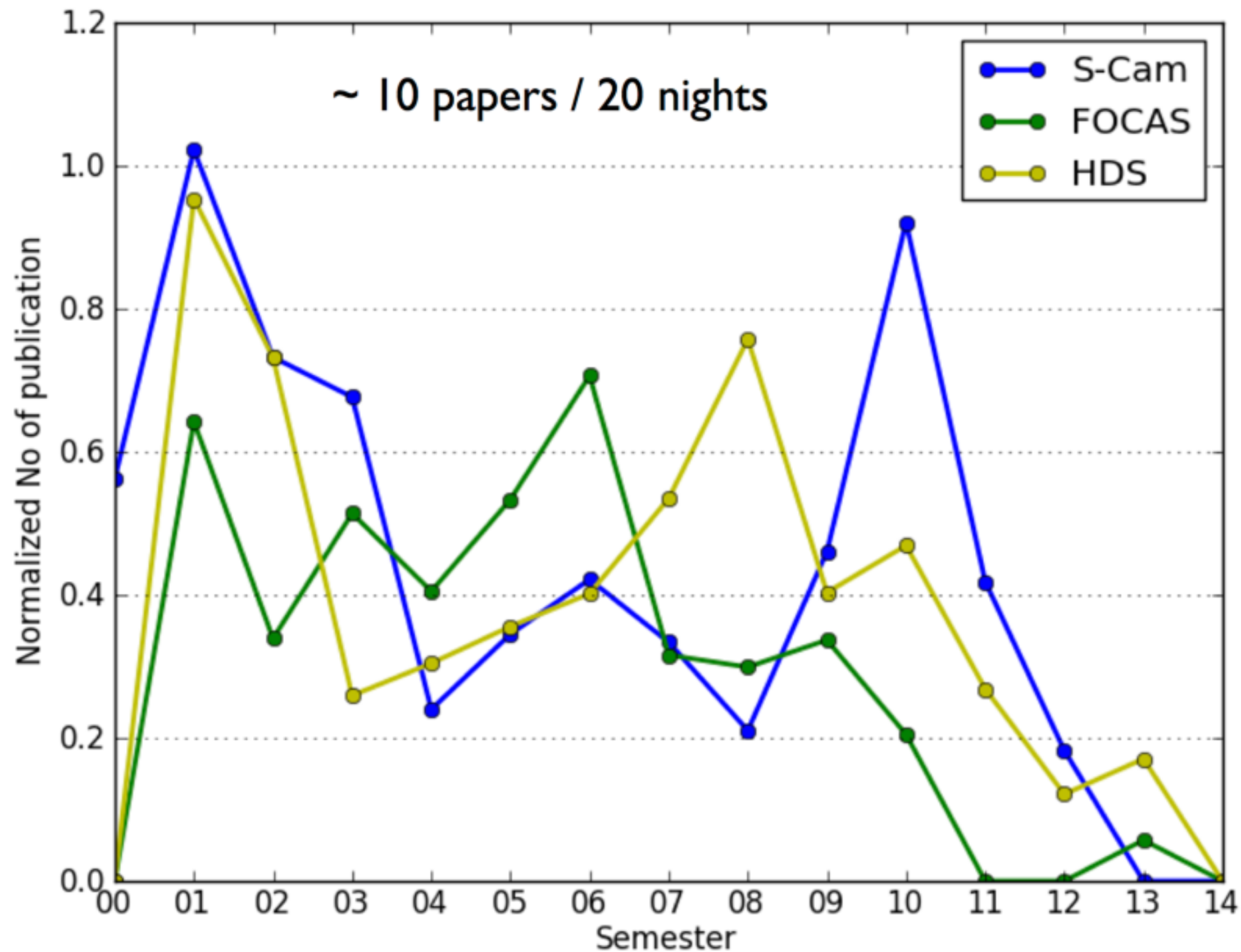
# Publication / Night - IR Instruments



Caveat:  
small statistics for COMICS  
(Publication < 1 after 2008)

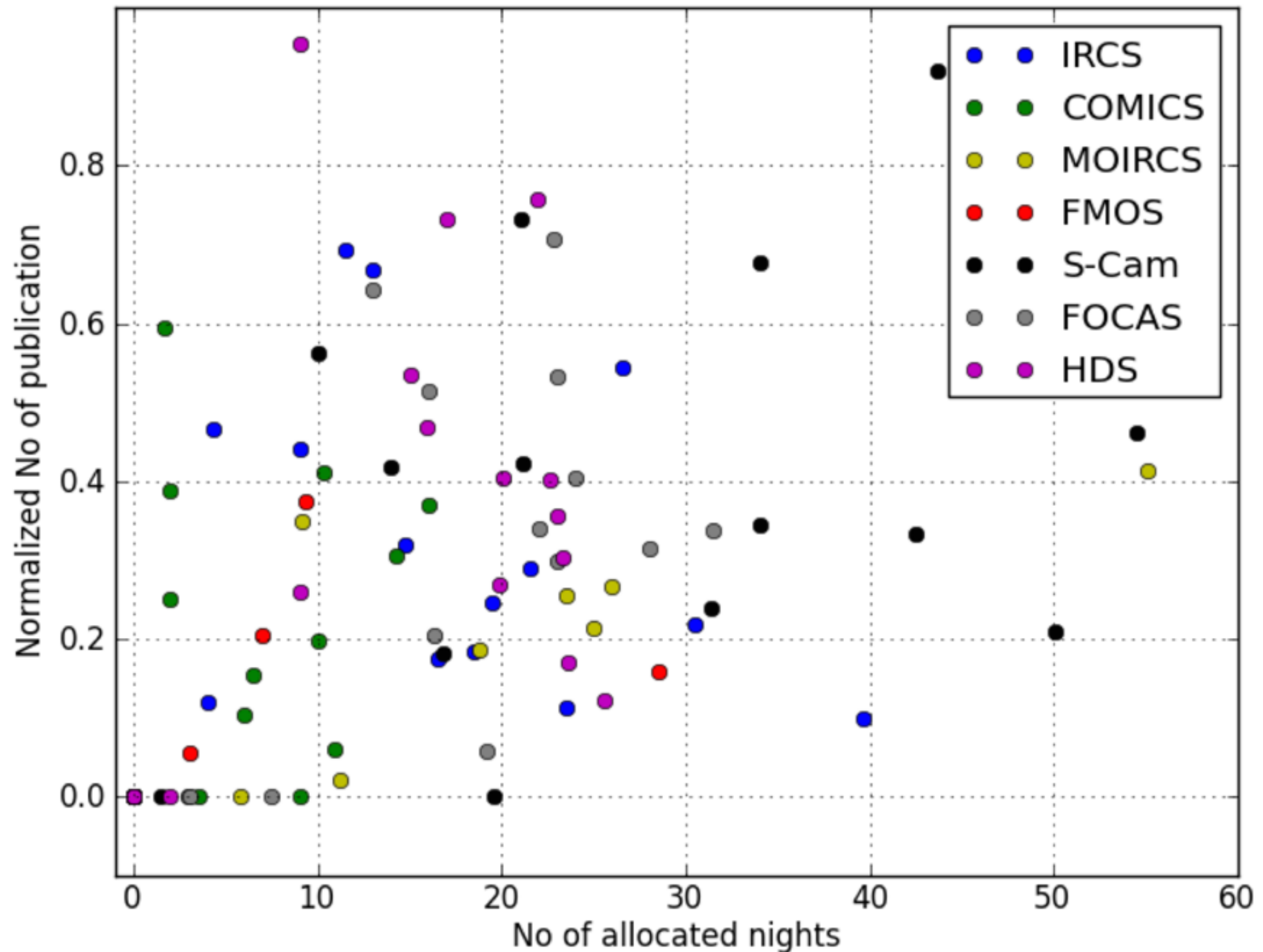


# Publication / Night - Opt Instruments



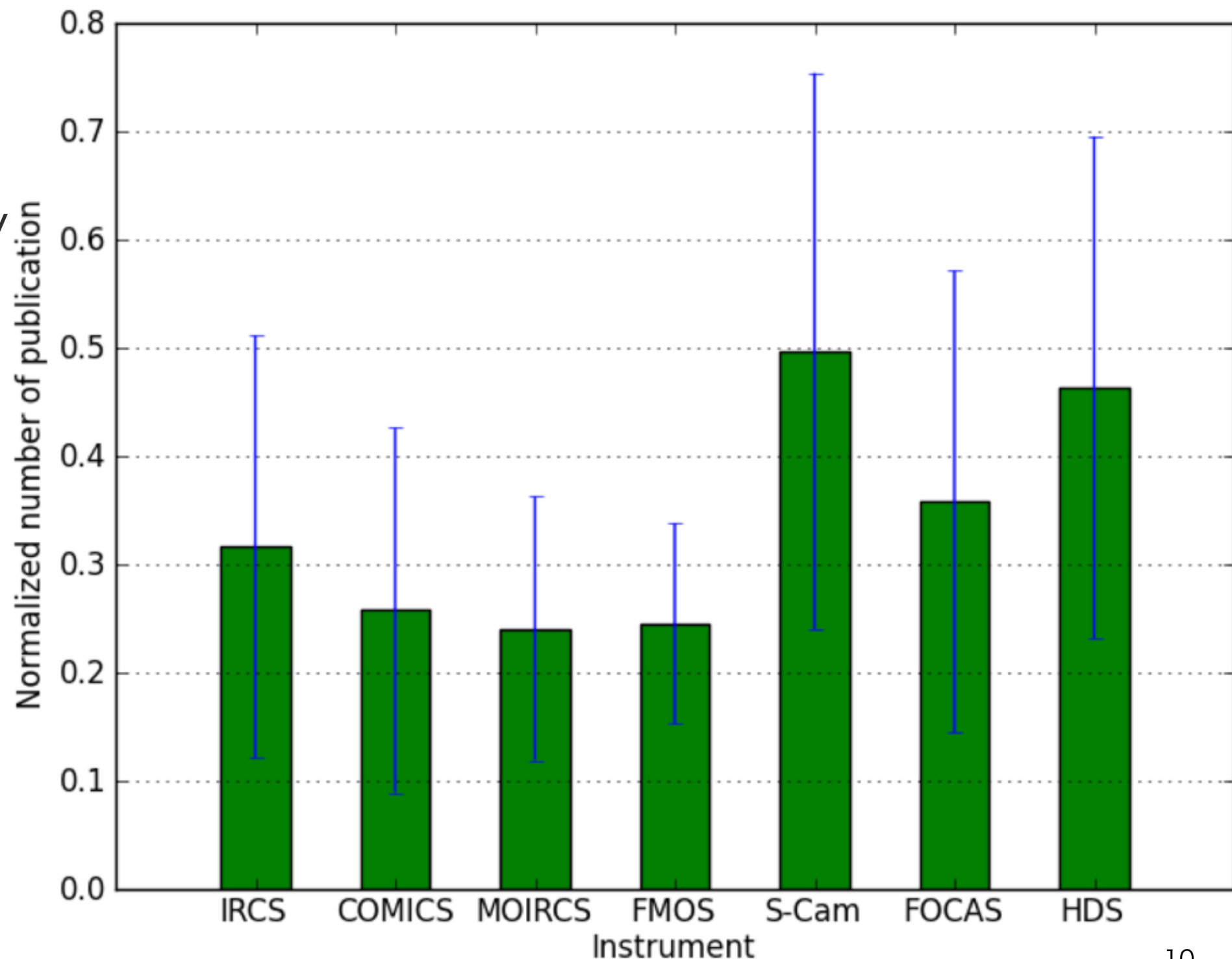


# Publication / Night vs. Allocated Nights (per year)

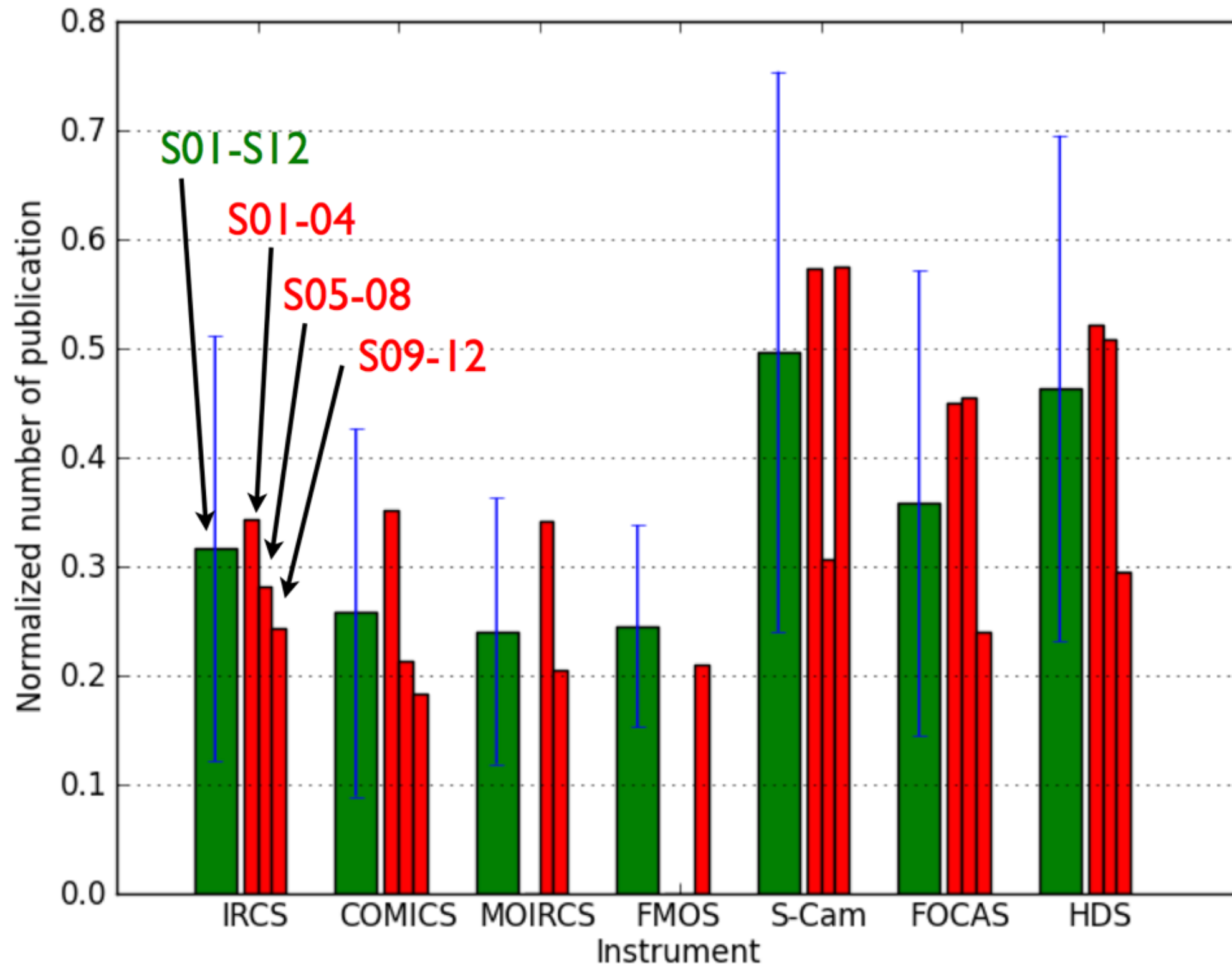


# Publication / Night for Seven Instruments

- Average of S00-S12B
- Error bar: dispersion for semesters
- Optical instruments show better efficiency in publication than IR  
(Opt: ~10 papers / 20 nights, IR: ~5 papers / 15 nights)

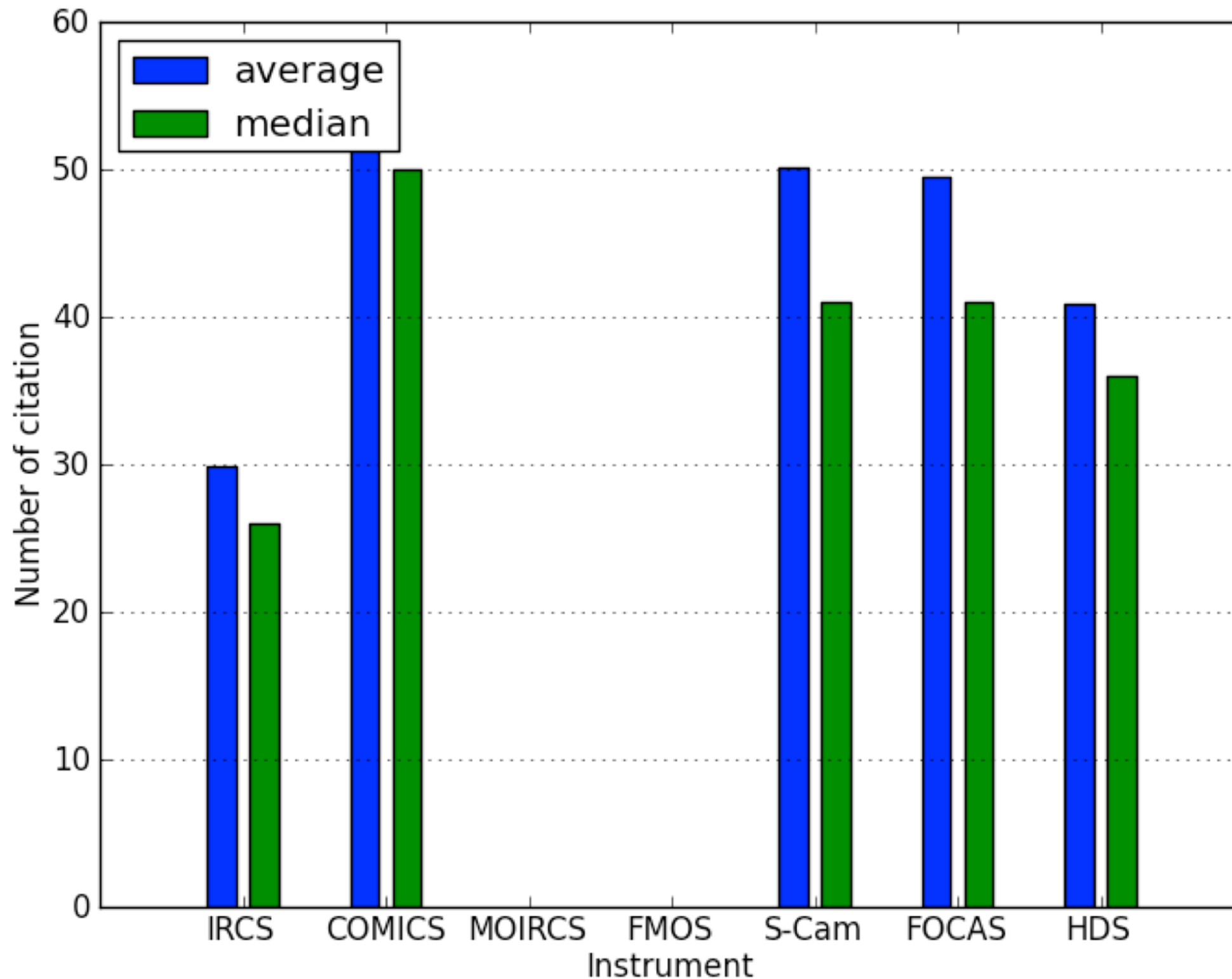


# Time Evolution of Publication / Night



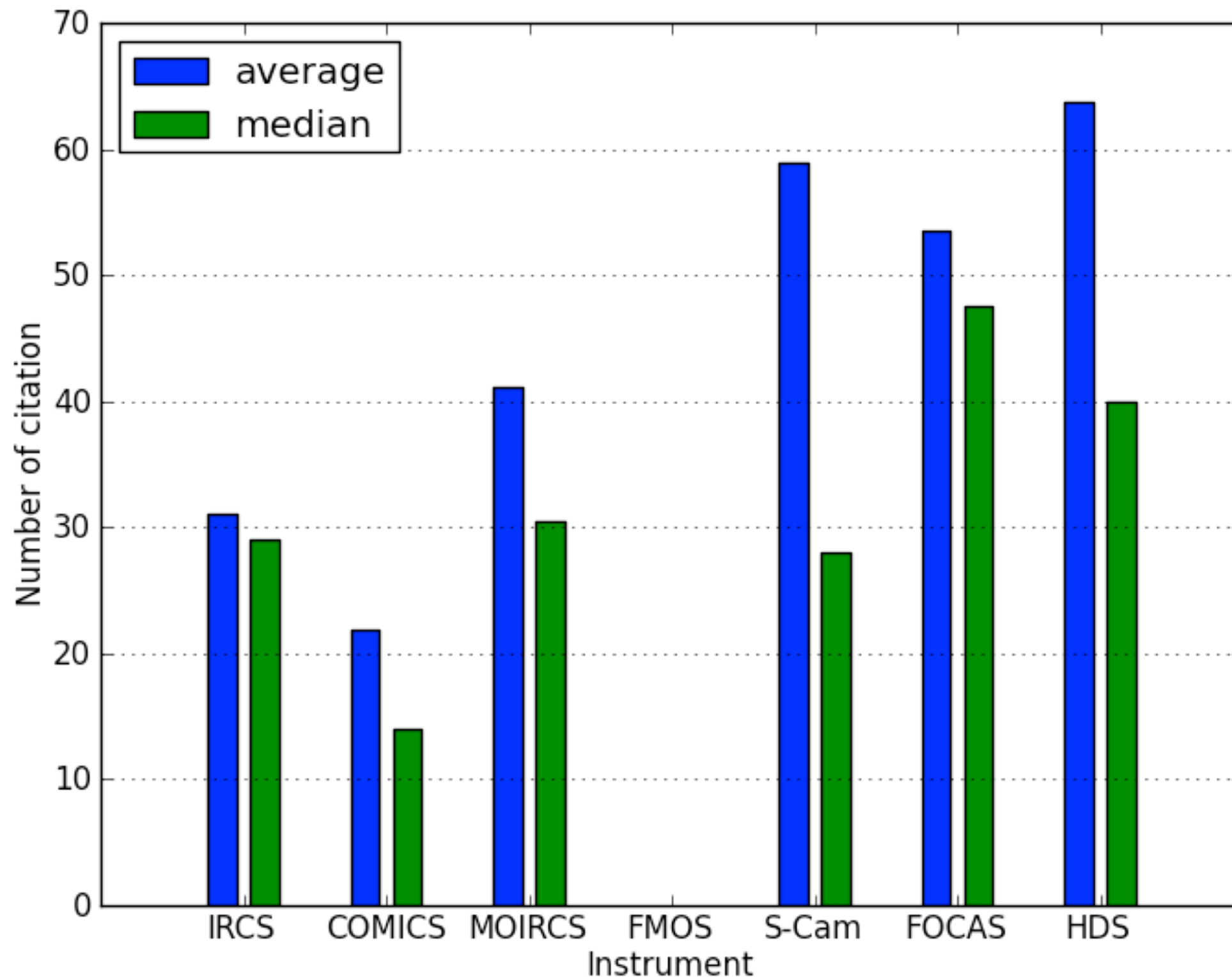
# Citations, 2001-2004 (year of publication)

---



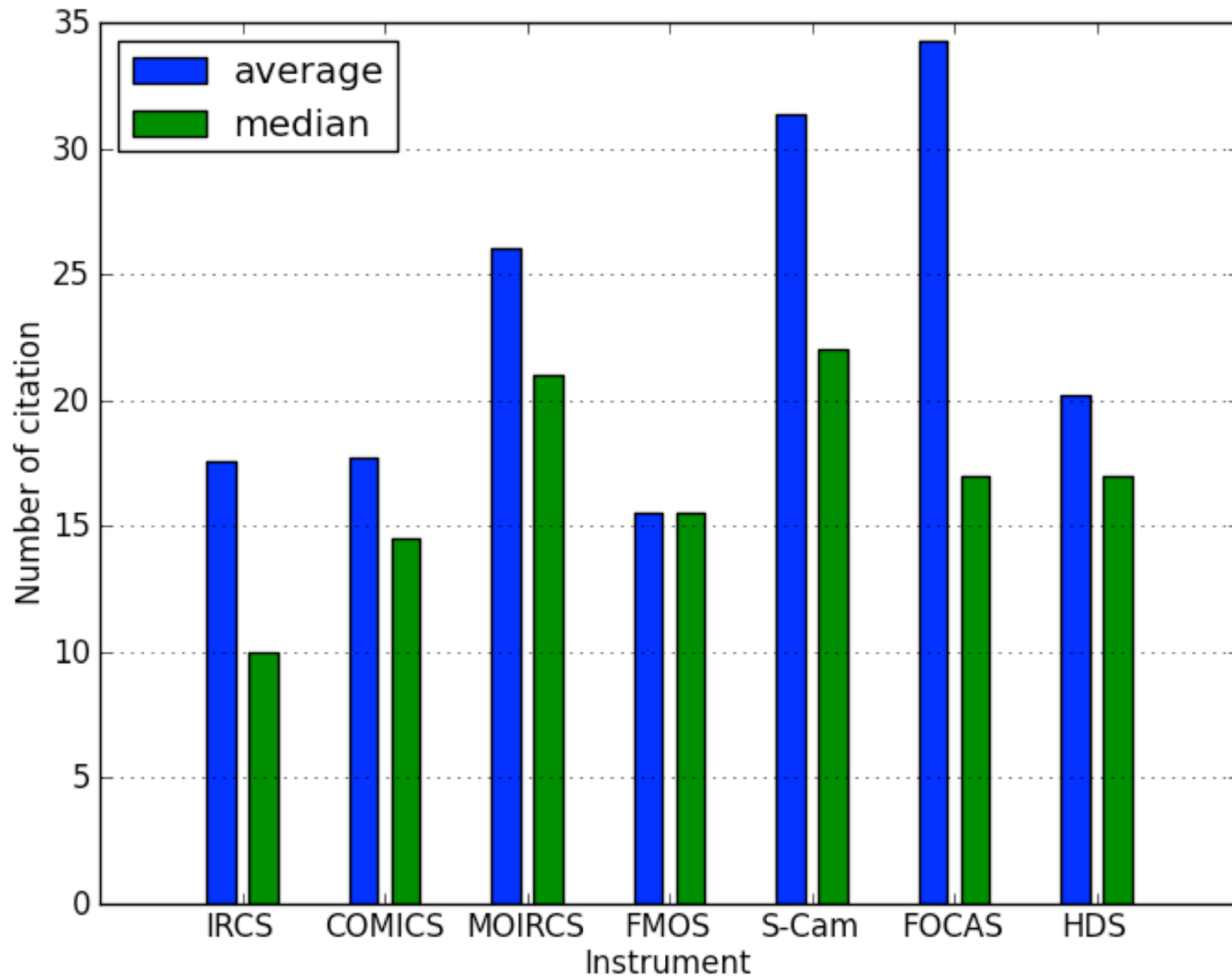
# Citations, 2005-2008 (year of publication)

---



# Citations, 2009-2012 (year of publication)

---



# Thank you very much for your cooperations.

---

- We plan to have publication survey annually for better tracking of publications and trend of instrument performance.
- In 2014 all past programs were targets of the survey. From 2015, PIs of recent (five years?) programs will be requested to report new publications.
- Publication survey results analyzed by Masaomi Tanaka-san are available at <http://www.naoj.org/Projects/newdev/instplan2015/>