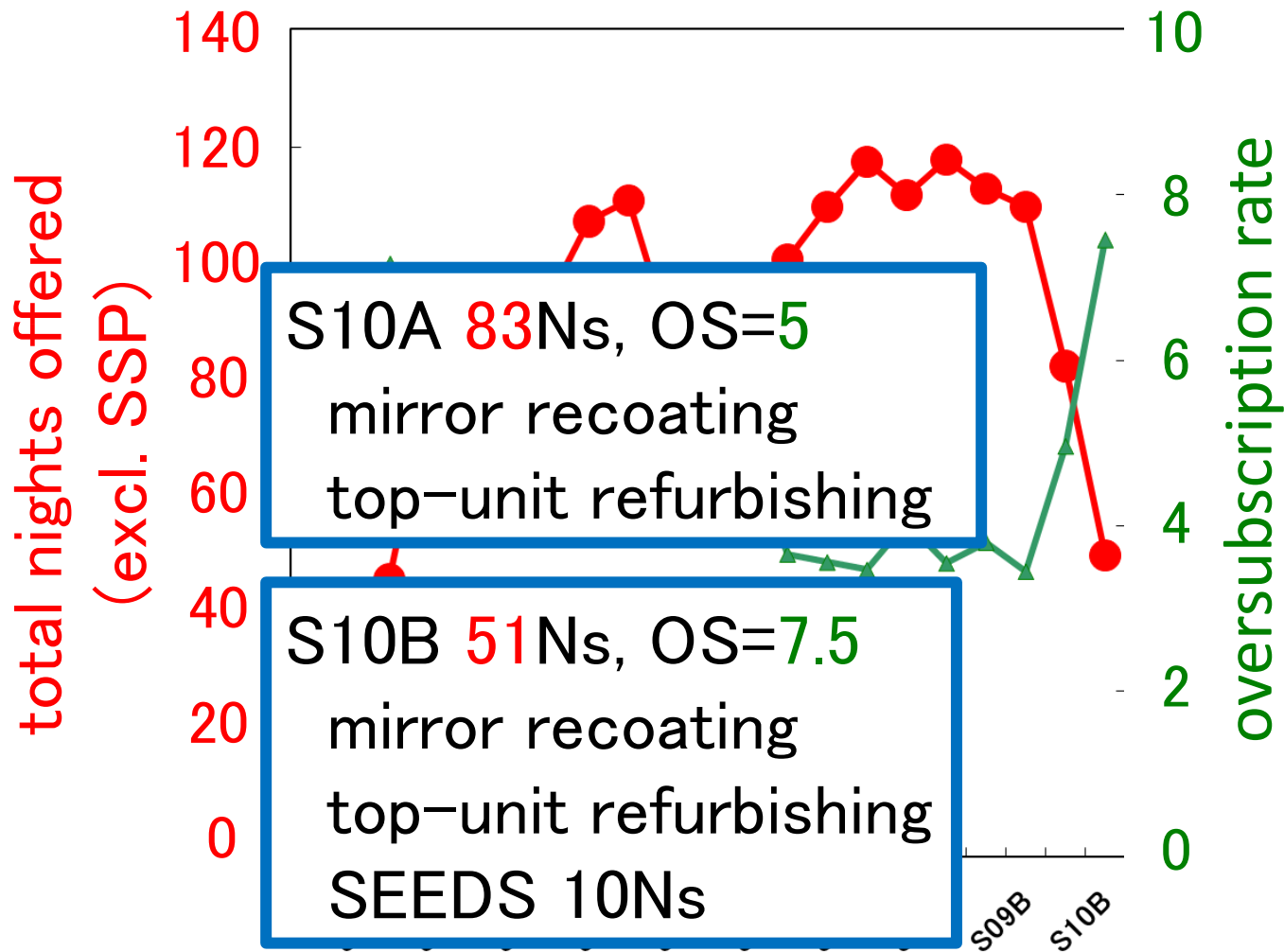


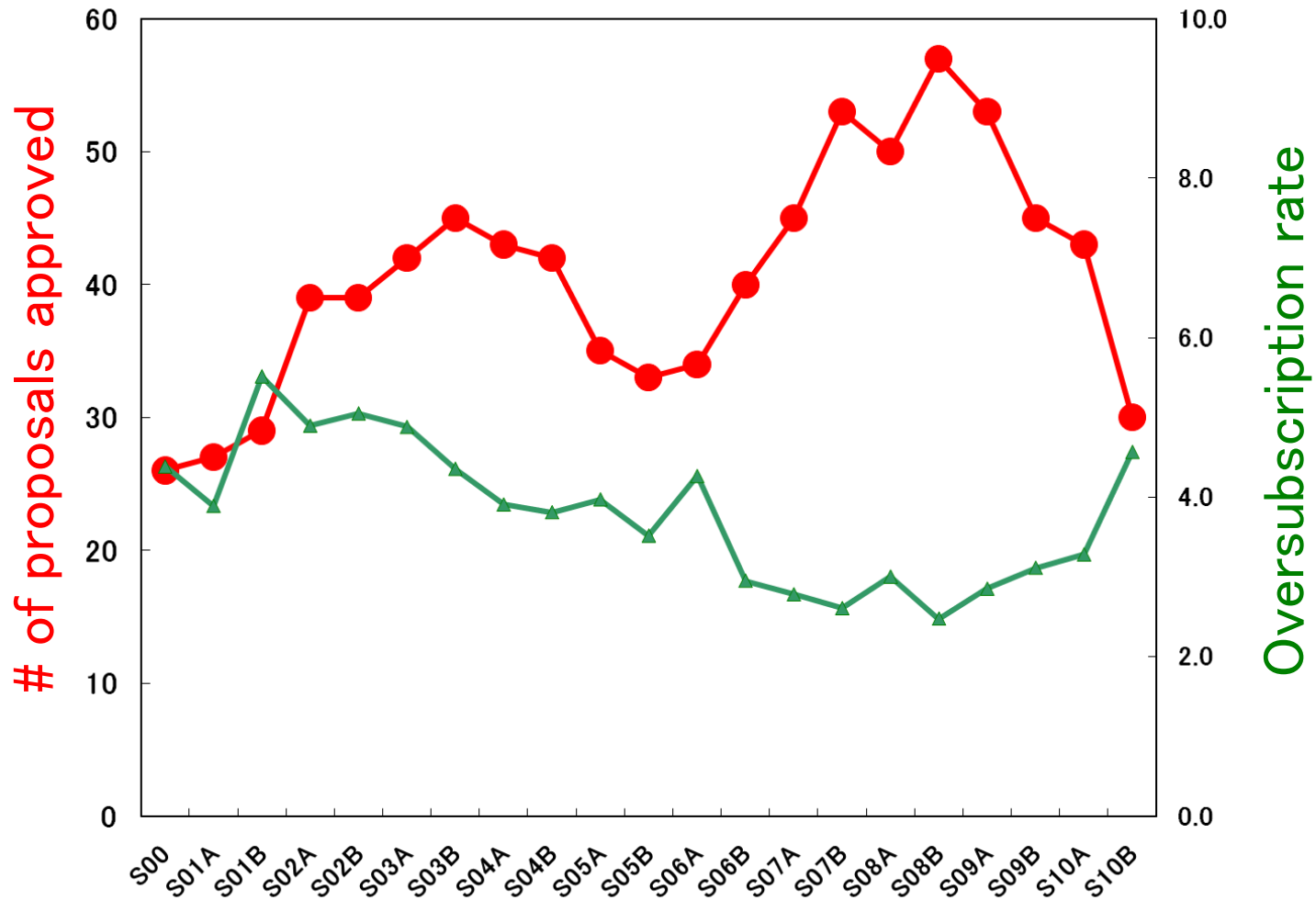
すばるTACから
Comments from TAC

嶋作一大 (東大)
Kazuhiro Shimasaku (Tokyo)

Oversubscription rate of previous semesters (total nights requested/total nights offered)



Oversubscription rate of previous semesters (props submitted/props approved)





Subaru Telescope Open Use Selection

Accepted proposals at each semester

- [Accepted proposals for Semester S00](#)
- [Accepted proposals for Semester S01A](#)
- [Accepted proposals for Semester S01B](#)
- [Accepted proposals for Semester S02A](#)
- [Accepted proposals for Semester S02B](#)
- [Accepted proposals for Semester S03A](#)
- [Accepted proposals for Semester S03B](#)
- [Accepted proposals for Semester S04A](#)
- [Accepted proposals for Semester S04B](#)
- [Accepted proposals for Semester S05A](#)
- [Accepted proposals for Semester S05B](#)
- [Accepted proposals for Semester S06A](#)
- [Accepted proposals for Semester S06B](#)
- [Accepted proposals for Semester S07A](#)
- [Accepted proposals for Semester S07B](#)
- [Accepted proposals for Semester S08A](#)
- [Accepted proposals for Semester S08B](#)
- [Accepted proposals for Semester S09A](#)
- [Accepted proposals for Semester S09B](#)
- [Accepted proposals for Semester S10A](#)

[News](#)

[Introduction](#)

[Observing](#)

[Proposals](#)

[Past Information](#)

[Call for Proposals](#)

[Publishing](#)

[Schedule](#)

[Science](#)

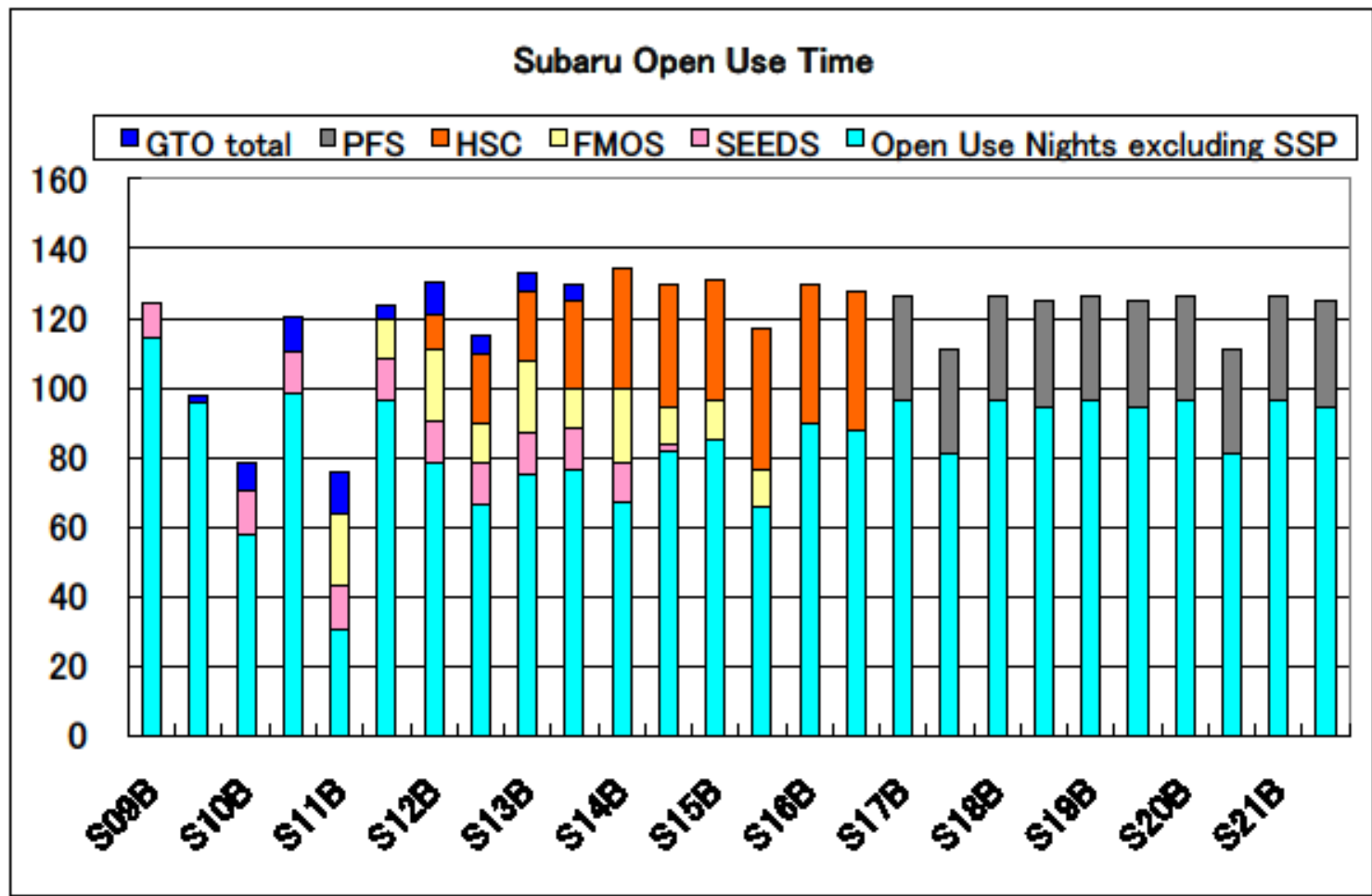
[Gallery](#)

[Information](#)

Screening statistics in the previous semesters

Semester		Proposals			Nights		
		Submitted	Accepted	Ratio	Requested	Awarded	Ratio
S00	2000/12 - 2001/03	114	26	23%	223	36	16%
S01A	2001/04 - 2001/08	105	27	26%	204	36	18%
S01B	2001/10 - 2002/03	160	29	18%	337	47	14%
S02A	2002/04 - 2002/09	191	39	20%	460	79	17%
S02B	2002/10 - 2003/03	197	39	20%	487.5	89	18%
S03A	2003/04 - 2003/09	205	42	20%	537	86	16%
S03B	2003/10 - 2004/03	196	45	23%	555	94.5	17%
S04A	2004/04 - 2004/09	168	43	26%	527.8	107.5	20%
S04B	2004/10 - 2005/03	160	42	26%	533	111	21%
S05A	2005/04 - 2005/08	139	35	25%	456.5	89	19%
S05B	2005/09 - 2006/01	116	33	28%	368.5	88	24%
S06A	2006/02 - 2006/07	145	34	23%	473.5	94	20%
S06B	2006/08 - 2007/01	118	40	34%	369.7	101	27%
S07A	2007/02 - 2007/07	125	45	36%	391.9	110	28%
S07B	2007/08 - 2008/01	138	53	38%	407.8	117.5	29%
S08A	2008/02 - 2008/07	150	50	33%	452.5	112	25%
S08B	2008/08 - 2009/01	141	57	40%	419	118	28%
S09A	2009/02 - 2009/07	151	53	35%	429.5	113	26%
S09B	2009/08 - 2010/01	140	45	32%	379.5	110	29%
S10A	2010/02 - 2010/07	141	43	30%	312.1	83	20%

SSP SIMULATION FROM 2010 TO 2022



SAC' s simulation:

Open-use nights from 2012 to 2022 (excl. SSP)

2012–2017 **SEEDS,FMOS,HSC**

Max 96 (12A, SSP=17)

Min 67 (14B, SSP=52.5)

67 (13A, SSP+mirror recoating)

Ave **80**

oversubscription rate $\sim 5-6$

2018–2022 **PFS**

Ave **90**

oversubscription rate ~ 5

too high oversubscription rate: TAC's agony(苦惱)

example:
clusters of galaxies,
LSS, cosmology
category

順位	タイトル
1	...
2	...
3	...
4	...
5	...
6	...
7	...
8	...
9	...
10	...
11	...
12	...
13	...
14	...
15	...
16	...
17	...
18	...
19	...
20	...



excellent



worth carrying out
(やらせてみたい)

sure

interesting

high risk high return



bad

高い競争率の悪影響

bad influences of too high oversubscription rate

良いプロポーザル(自分のプロポーザル)が落ちる
サイエンスの多様性、意外性が失われる
分野によっては存亡の危機
利用者が減り、顔ぶれも固定化
国際プロポーザルが優位になる
継続課題の完遂にかかる時間が長期化

対抗措置は？

1課題当たりの夜数を減らしてたくさん採択
インテンシブを禁止
SSPに参加する

シミュレーションはシミュレーション

A simulation is no more than a simulation

ユーザーの意見で結果は変えられる

You can change the future